



半封闭活塞式

SEMI-HERMETIC RECIPROCATING

制冷压缩机

REFRIGERATION COMPRESSORS



上海帝亚制冷设备工程有限公司(监制)
Shanghai Diya Refrigeration Equipment CO.,LTD.
Address:Baoshan DistrictShangha City, China

浙江帝亚制冷设备有限公司(制造商)
Zhejiang Diya Refrigeration Equipment CO.,LTD.
Address: Lincheng Industry Area,Huzhou City,
Zhejiang Provience,China

浙江新程智冷新能源科技股份有限公司(制造商):
浙江省新昌县万丰航空小镇1号厂房
Zhejiang Xincheng Intelligent Refrigeration new energy technology CO.,LTD.
Address:Wanfeng Industry Area,Shaoxing City,Zhejiang Provience,China

2025年06月印制

COMPRESSORS

合作·创新·共赢

COOPERATION, INNOVATION AND WIN-WIN

浙江帝亚制冷设备有限公司
ZHEJIANG DIYA REFRIGERATION EQUIPMENT CO.,LTD.
浙江新程智冷新能源科技股份有限公司
ZHEJIANG XINCHENG ZHILENG NEW ENERGY TECHNOLOGY CO., LTD.



Comany Interoduction

浙江新程智冷新能源科技股份有限公司是专业从事各种制冷设备设计开发生产销售和服务为一体的专业制冷企业。

公司主要生产半封闭压缩机、系列风冷、水冷压塑冷凝机组及各种零配件；提供食品保鲜、冷冻冷藏及速冻设备配件；提供工商业、医用、船用空调制冷设备以及各种高、中、低温试验设备。

本着“专业之上，精益为本”的创业思路，秉承“绿色、节能、高效、环保”的生产经营理念，精心引进和培养了一批经验丰富的专业技术和管理人才，在不断加强企业现代管理和积极增强企业综合竞争力的同时，积极地参与市场，以卓越的产品质量和高效快捷的售后服务，赢得了国内外客户和商业界的广泛认可，

热忱欢迎国内外新老客户携手共进，合作共赢！

Zhejiang Xincheng Zhileng New Energy Technology Co., Ltd. is a professional refrigeration enterprise specializing in the design, development, production, sales and service of various refrigeration equipment.

The company mainly produces semi-hermetic compressors, series of air-cooled, water-cooled compression molding condensing units and various spare parts; provides food preservation, refrigeration and quick-freezing equipment accessories; provides industrial and commercial, medical, marine air-conditioning and refrigeration equipment and various high, medium and Low temperature test equipment.

In line with the entrepreneurial idea of "professionalism first, lean first" and the production and management philosophy of "green, energy-saving, efficient and environmentally friendly", we have carefully introduced and trained a group of experienced professional technical and management talents to continuously strengthen the enterprise. While modern management and actively enhancing the company comprehensive competitiveness, it actively participates in the market and has won wide recognition from domestic and foreign customers and the business community with its excellent product quality and efficient and fast after-sales service.

Warmly welcome new and old customers at home and abroad to work together for win-win cooperation!

应用范围说明

Application Limits Instruction

任何类型的压缩机都有其运行界限。使用压缩机时必须严格保证压缩机运行在厂家规定的运行界限范围内，否则，压缩机在恶劣条件下长期运行将导致压缩机损毁。单、双级压缩机运行界限的限制，为达到更低的蒸发温度或更高的冷凝温度，则需采取必要的技术措施，以扩大压缩机的运行界限。

压缩机只允许在图中所示运行界限以内运行，请注意带颜色的区域。设计工况不能在使用限值附近，压缩机也不能持续运行在限值附近，以防高温碳化（排气温度要控制在 140℃ 以下，电机温度要控制在 110℃ 以下）、电机过载、电机冷却不足、润滑不良、效率衰减、振动、噪音、变形咬合等。

使用变频器会出现对压缩机运行界限的其它限制。进一步说明咨询厂家。

在液体再冷或吸气温度变化的情况下，性能数据与本样本的数据会有显著差别。

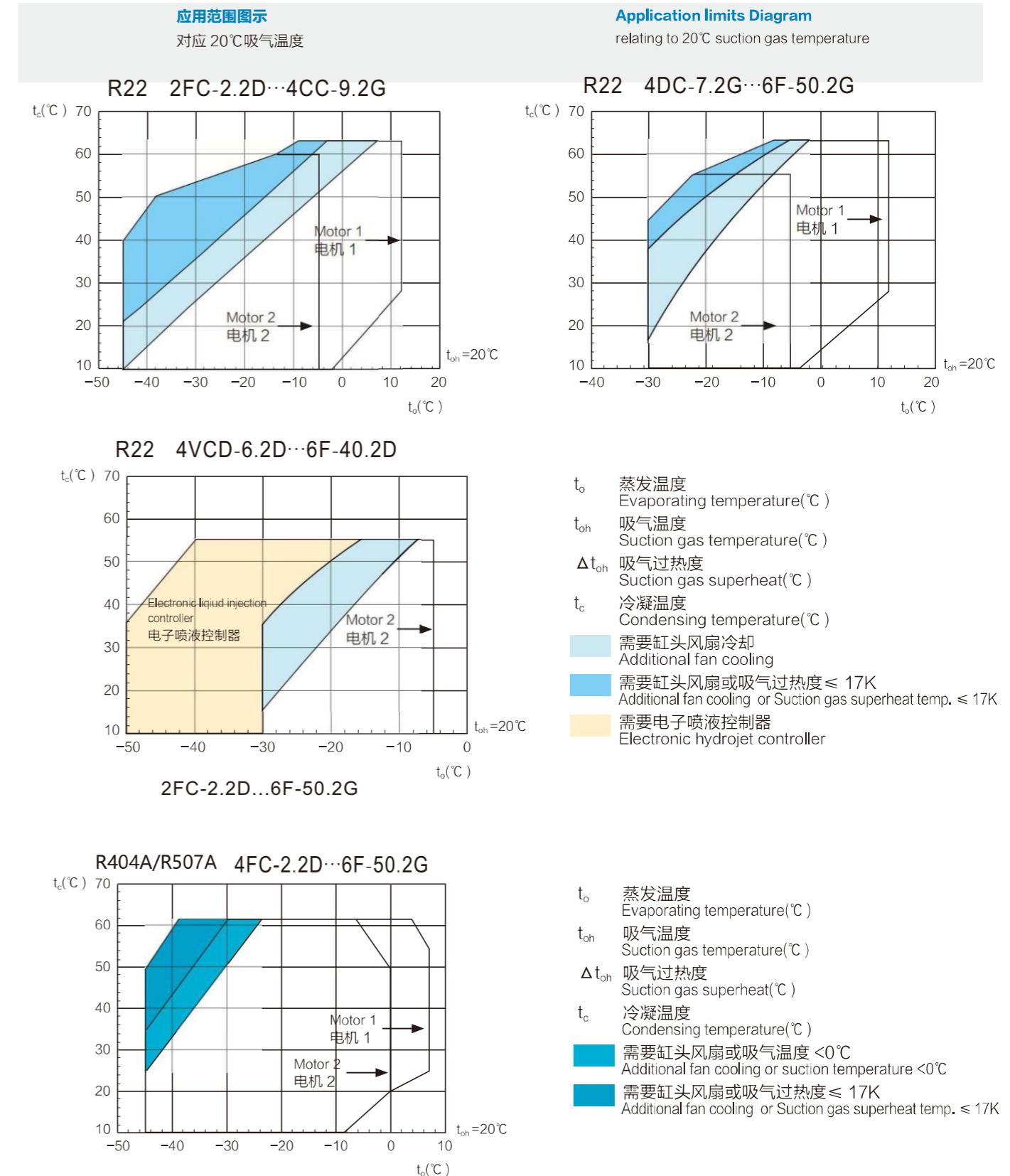
本样本的数据适用于 50Hz 下运行，对于在 60Hz 下运行，可以根据本样本上提供的数据乘以系数 1.2。最大工作电流不变。

Any type of compressor has its running limit. When using the compressor, it is necessary to ensure that the compressor runs within the operating limit specified by the manufacturer. Otherwise, the compressor will be damaged in the long run due to bad conditions. In order to achieve lower evaporator temperature or higher condensation temperature, it is necessary to take technical measures to expand the operating limit of single&two compressor.

The compressor is only allowed to run within the operating limit shown in the diagram. Please note the area with color. The design condition cannot be near the limit value, and the compressor cannot continue to operate near the limit value. in case of carbonization for high temperature (Exhaust gas temperature should be controlled below 140℃ , motor temperature should be controlled below 110℃), motor over load, poor cooling of motor, poor lubrication , the reduction of efficiency ,vibration, noise,deformation of the bite and so on.

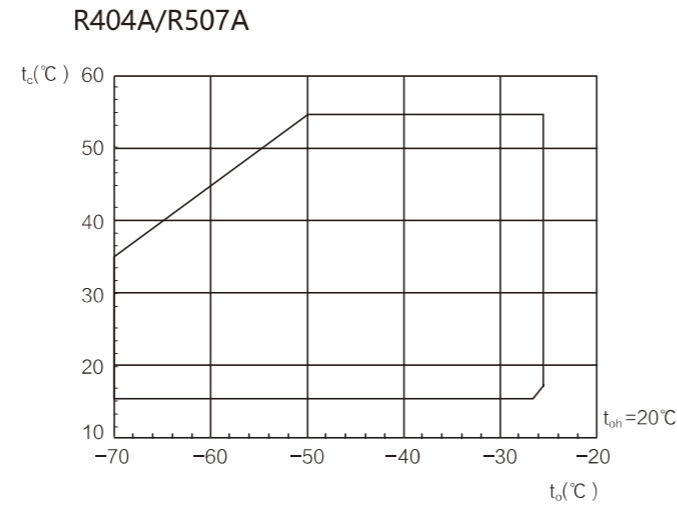
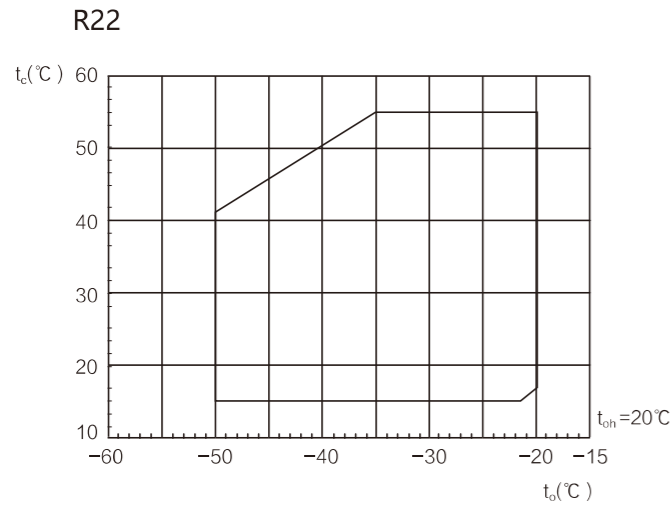
The use of a frequency converter will show other restrictions on the compressor's operating boundaries. Further instruction of the manufacturer.

There is a significant difference between the performance data and the data of this sample in the case of liquid recooling or inhalation temperature.this sample data is suitable for running under 50Hz. For running under 60Hz, the data provided in this sample can be multiplied by coefficient 1.2. The maximum working current is the same.



低温双级应用范围图示
对应 20°C 吸气温度

Low Temperature Two Stage Application limits Diagram
relating to 20°C suction gas temperature

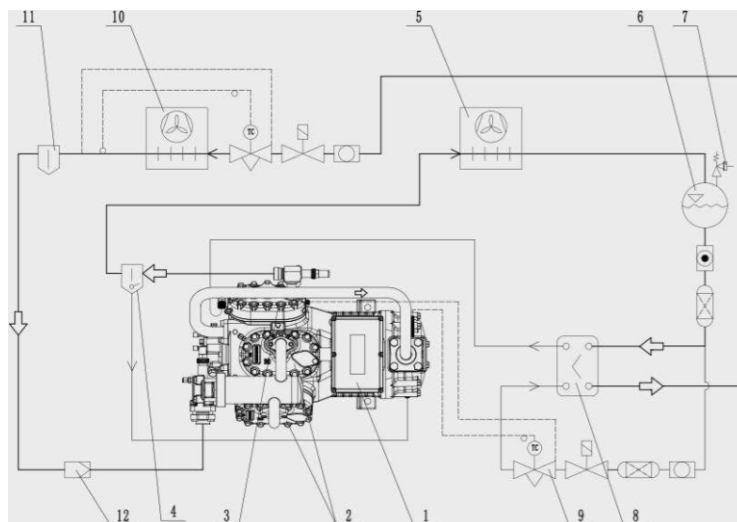


t_o 蒸发温度
 t_{oh} 吸气温度
 t_c 冷凝温度

t_o Evaporating temperature(°C)
 t_{oh} Suction gas temperature(°C)
 t_c Condensing temperature(°C)

带液体再冷器的双级系统
中间冷却采用热力膨胀阀

Two-stage system with liquid subcooler
Interstage cooling by mechanical TX valve



- | | |
|-----------|--------------------------------|
| 1. 压缩机 | 1. Compressor |
| 2. 低压缸 | 2. Low pressure cylindeiheads |
| 3. 高压缸 | 3. High pressure cylindeiheads |
| 4. 油分离器 | 4. Oil separator |
| 5. 冷凝器 | 5. Condenser |
| 6. 贮液器 | 6. Liquid receiv |
| 7. 安全阀 | 7. Safety valve |
| 8. 液体再冷器 | 8. Liquid subcooler |
| 9. 膨胀阀 | 9. Expansion valve |
| 10. 蒸发器 | 10. Evaporator |
| 11. 气液分离器 | 11. Gas liquid seperator |
| 12. 吸气过滤器 | 12. Suction gas filter |

智冷新程 为地球降一度！

A new journey of smart cooling has dropped to the earth!





装配车间



压缩机机体加工中心



喷漆流水线



谷轮型系列压缩机
GULUNSERVIES COMPRESSORS

外形尺寸图
DIMENSIONAL DRAWINGS



BS-0300



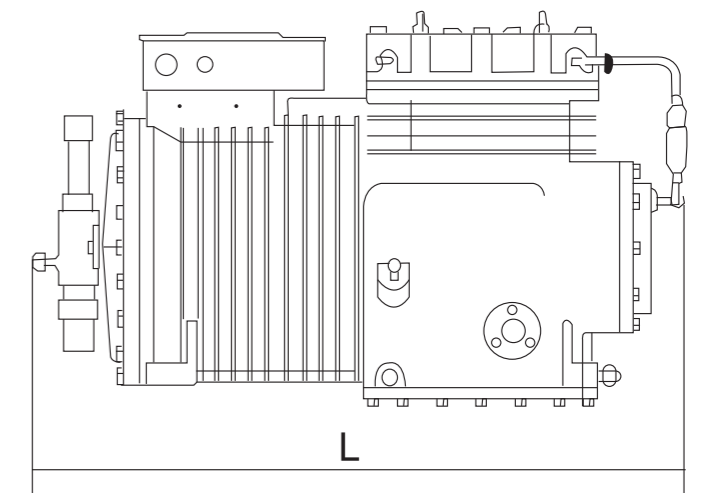
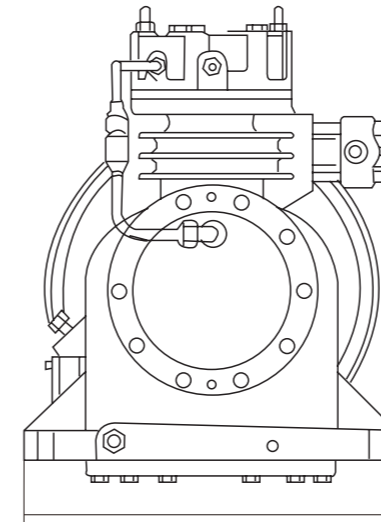
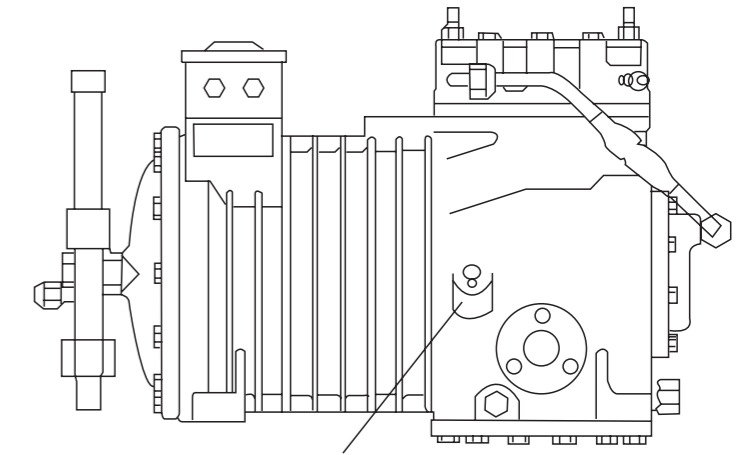
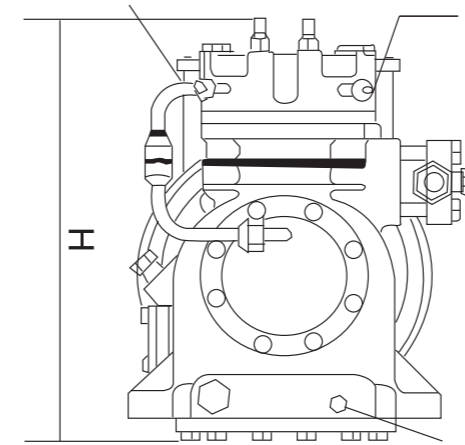
BS-0500



BS-0800/1000



BS-1500



参数表 PARAMETERS

型号	名义功率 HP/WK	机械参数		电器参数			接管			
		缸数	排气量 m³/h	工作电流 (A)	最大功率 消耗kw	启动电流 (A)	排气管mm		吸气管mm	
							毫米mm	英寸inch	毫米mm	英寸inch
BS-0300	3/2.2	2	12.2	5.2-5.7	—	26-32	19	¾	19	¾
BS-0500	5/3.7	2	18.4	7.6-8.6	—	53-58	19	¾	25	1
BS-0800	8/5.5	2	26.6	15.0	—	74-81	25	1	32	1¼
BS-1000	10/7.5	2	36.0	15.6-17.6	—	103-126	25	1	32	1¼
BS-1500	15/10.5	3	54.0	22.3-24.3	—	150-184	28	1½	38	1½

参数表 PARAMETERS

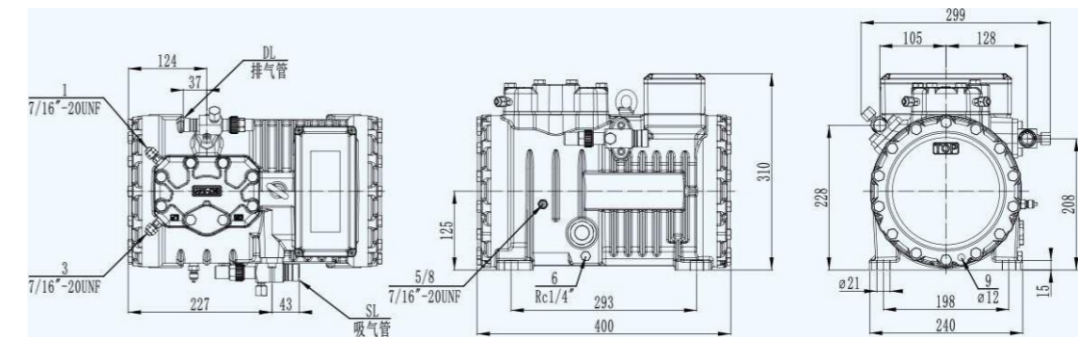
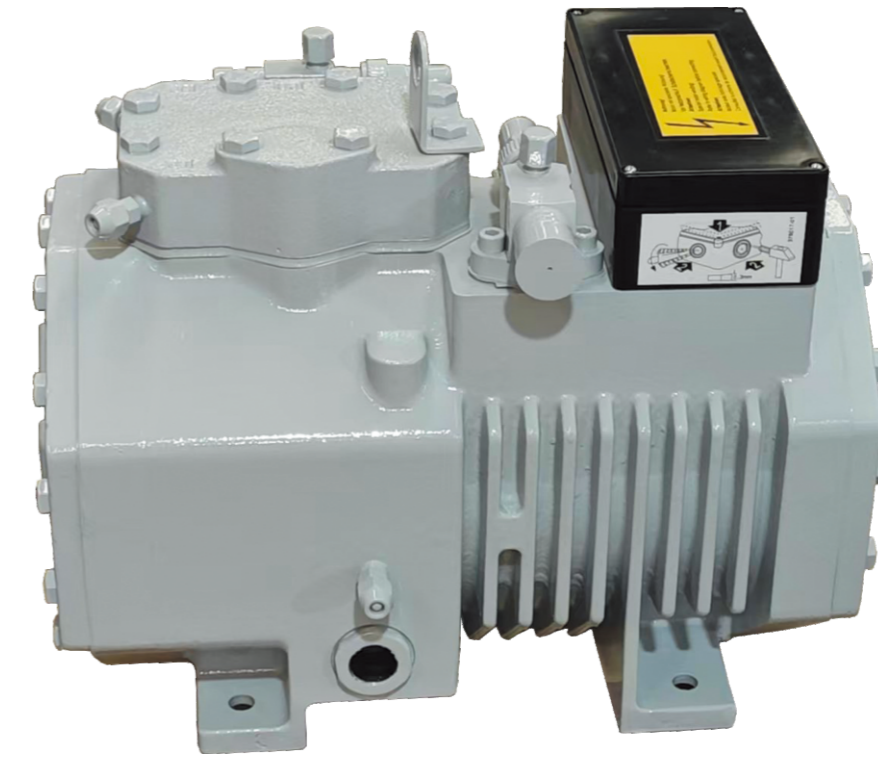
型号	曲轴箱 加热器 WK	安装底脚		外形尺寸			冷冻机油		重量	
		底角孔 尺寸mm	底角安装尺寸 D×E(mm)	长(L) mm	宽(B) mm	高(H) mm	油充注量 L	牌号	净重	能量调节
BS-0300	100	15	310x210	518	261	305	1.25	对于(HFC) 制冷剂采用 聚酯油 Suniso 3gs	63	—
BS-0500	100	15	355x230	585	282	380	1.85		91	—
BS-0800	100	15	380x280	624	320	466	3.5		133	—
BS-1000	100	15	380x280	624	320	466	3.5		140	—
BS-1500	120	15	480x315	748	356	448	4.8		175	—

压缩机制冷量
Compressor refrigerating capacity

小二缸系列
SMALL TWO CYLINDER SERIES

制冷量基于吸气过热度30℃，
液体没有过冷，电机转速=1450转/分
Refrigerating capacity is based upon Suction degree of superheat 30℃,
When degree of super-cooling is 5℃, the motor's rotating speed will be 1450rpm

压缩机型号 compressors Type	制冷剂 Refrigerants	冷凝温度 Condensing temperature ℃	制冷量 Q ₀ (KW) Refrigerating capacity Q ₀ (kw)											
			蒸发温度 °C Evaporating temperature °C											
			5	0	-5	-10	-15	-20	-25	-30	-35	-40	-45	
BS-0300	R22	30			8.43	6.80	5.35	4.07	2.73	1.86				
		40			7.38	5.82	4.53	3.37						
		50			6.30	4.94	3.84	2.56						
	R502	30						4.44	3.33	2.62	1.86	1.3	0.82	
		40						3.90	2.10	2.10	1.4	0.93	0.47	
		50						3.26	1.57	1.60	0.94	0.56		
BS-0400	R22	30	14.8	11.79	10.6	8.43	6.75	5.18	3.84	2.50				
		40	13.3	10.08	9.20	7.27	5.70	4.25						
		50			7.91	6.16	4.42	3.43						
	R502	30						5.88	4.68	3.6	2.56	1.8	1.22	
		40						5.03	3.91	2.88	1.95	1.2	0.61	
		50						4.12	3.08	2.15	0.99	0.58		
BS-0500	R22	30			13.1	10.8	8.72	6.86	5.3	3.74				
		40			11.8	9.60	7.62	6.06	5.93					
		50			10.4	8.37	6.28	5.03	4.86					
	R502	30						7.74	4.24	4.65	3.43	2.39	1.69	
		40						6.52		3.90	2.56	1.69	1.11	
		50						5.46		2.90	1.92	1.28		
BS-0800	R22	30	28.1	23.95	19.8	16.1	12.9	9.88	7.33	5.38				
		40	25.6	21.63	18.0	14.8	11.7	8.84						
		50	23.3	19.42	16.1	13.0	10.2	7.79						
	R502	30						11.0	8.39	6.16	4.54	3.14	2.10	
		40						9.20	7.10	5.17	3.61	2.38	1.46	
		50						7.67	5.76	4.07	2.67	1.63		
BS-1000	R22	30			26.5	21.4	17.5	13.7	10.7	8.14				
		40			23.7	19.4	15.4	12.1						
		50			20.2	17.1	13.5	10.6						
	R502	30						15.0	12.0	9.31	6.52	4.77	2.91	
		40						12.7	10.0	7.56	4.95	3.38	1.86	
		50						10.7	8.20	5.99	3.66	2.30		
BS-1500	R22	30		23.95	39.0	31.8	25.4	20.2	15.7	12.0				
		40			34.9	28.3	22.6	17.8						
		50			30.7	24.9	18.5	15.6						
	R502	30						22.7	18.4	14.4	10.7	7.45	4.77	
		40						19.2	15.1	11.5	8.14	5.35	3.38	
		50						15.8	12.3	8.95	6.05	3.84		

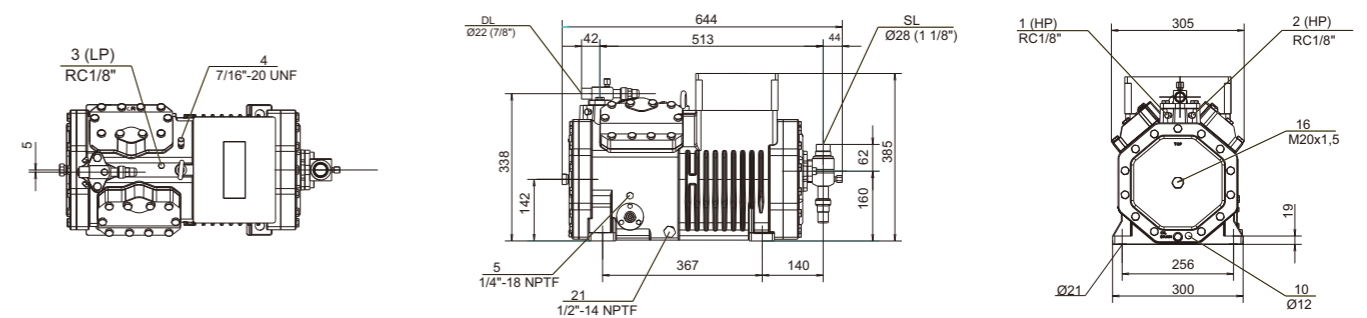
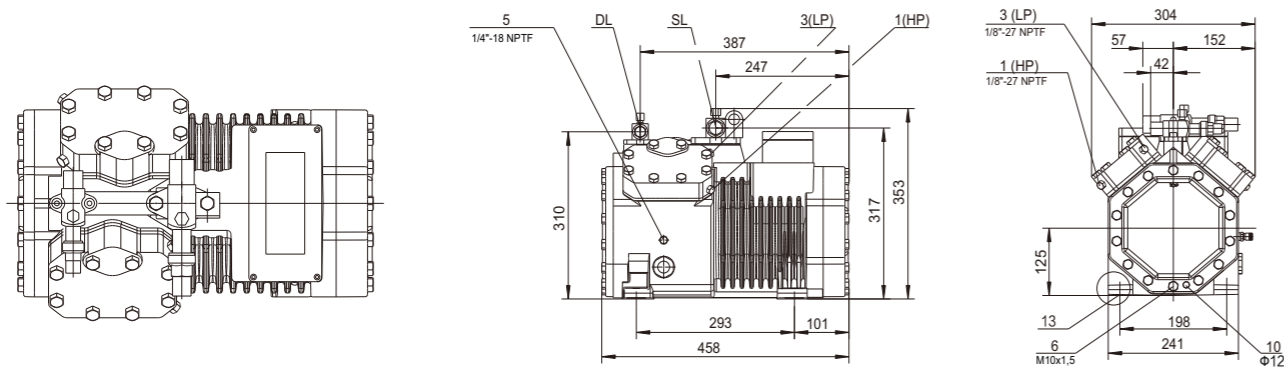
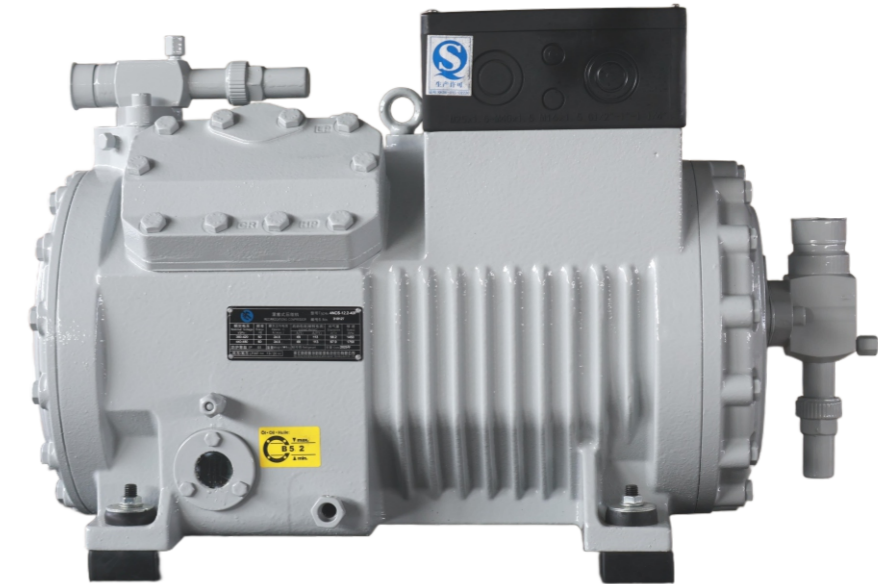
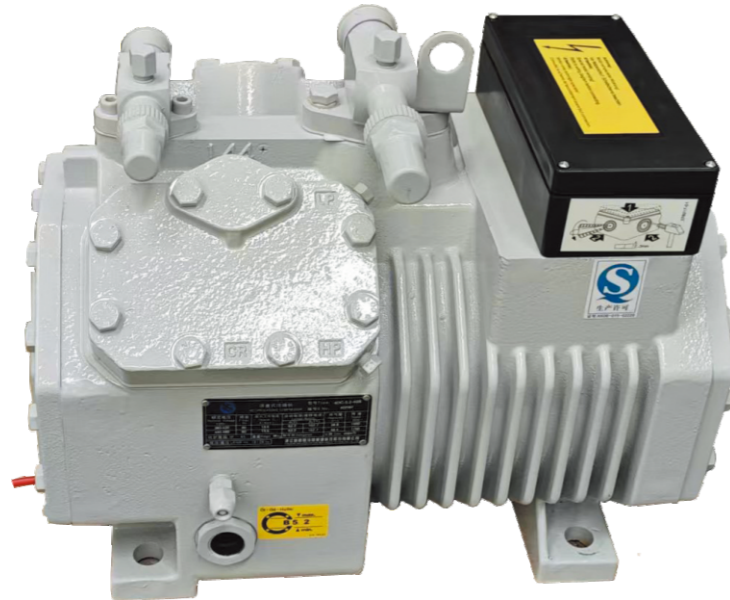


参数表 PARAMETERS

Compressor type	Nominal motor power HP/KW	Displacement (50Hz)m ³ /h		Number of Cylinder × Diameter × Stroke(mm)	Aspirator, exhaust valve take-over		Oil injection volume(L)	Power supply V/∅/Hz	Electrical parameter		Crankcase Heater (220) W	Oil supply method	Weight (including freezing oil)Kg
		Low Pressure	High Pressure		DL	SL			Max operating current(A)	Starting current/rotor locked current(A)			
2FC-2.2	2/1.5		9.54	2×∅46×33	∅16 5/8"	∅12 1/2"	1.5	380~420YY /3/50	5.3	22.5	60	油泵	45
2FC-3.2	3/202		9.54	2×∅46×33	∅16 5/8"	∅12 1/2"	1.5		6.1	22.5	60		
2DC-2.2	2/1.5		13.42	2×∅50×55	∅22 7/8"	∅16 5/8"	1.5	440~480YY /3/60	7.5	30.7	120	强制润滑	67
2DC-3.2	3/2.2		13.42	2×∅50×55	∅22 7/8"	∅16 5/8"	1.5		8.6	37.0	120		
2CC-3.2	3/2.2		16.24	2×∅55×39.3	∅22 7/8"	∅16 5/8"	1.5		9.1	37.0	120		70
2CC-4.2	4/3		16.24	2×∅55×39.3	∅22 7/8"	∅16 5/8"	1.5		10.0	44.2	120		

小四缸系列
SMALL FOUR CYLINDER SERIES

中四缸系列
MIDDLE FOUR CYLINDER SERIES



参数表 PARAMETERS

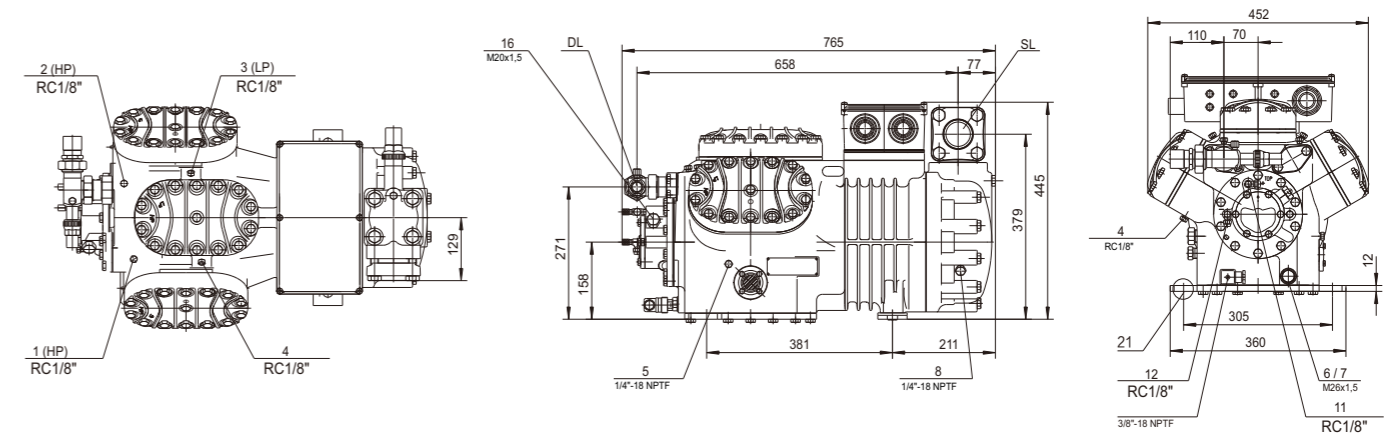
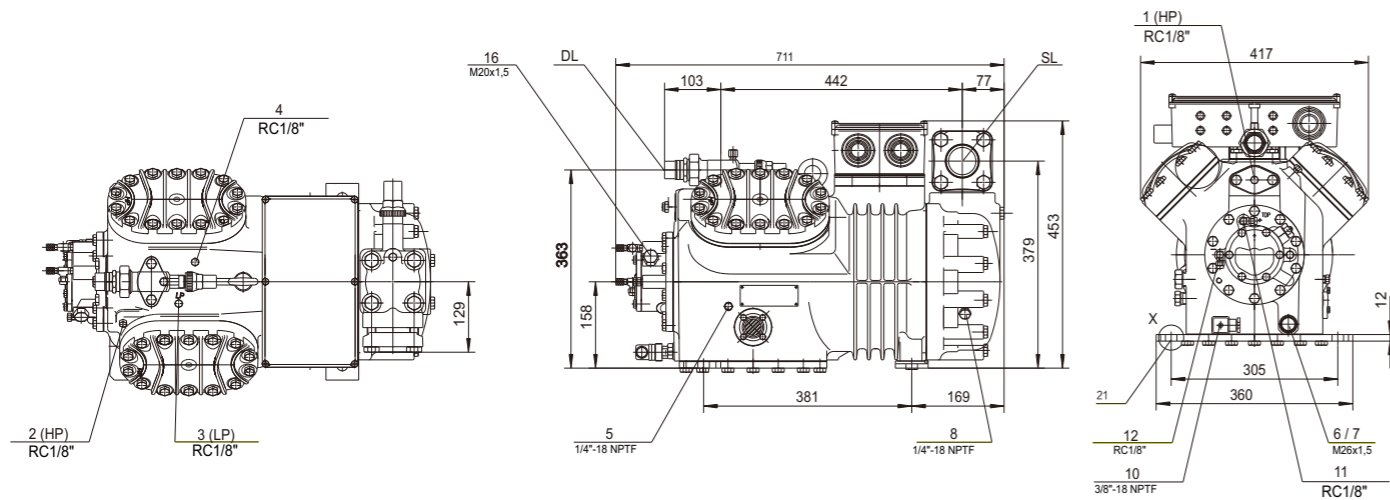
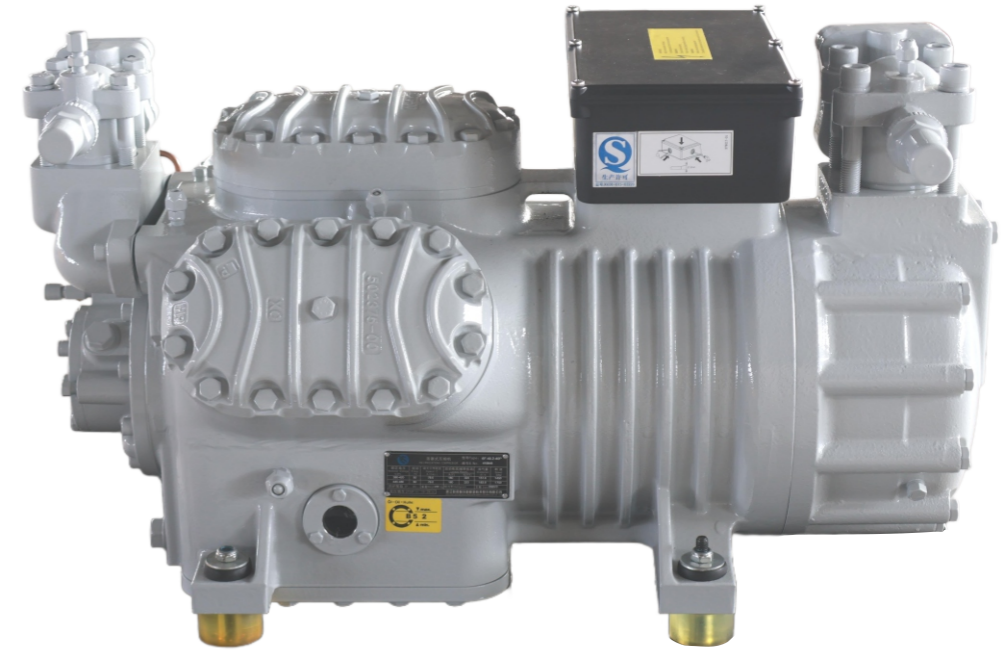
Compressor type	Nominal motor power HP/KW	Displacement (50Hz)m ³ /h		Number of Cylinder × Diameter × Stroke(mm)	Aspirator, exhaust valve take-over		Oil injection volume(L)	Power supply V/∅/Hz	Electrical parameter		Crankcase Heater (220) W	Oil supply method	Weight (including freezing oil)Kg
		Low Pressure	High Pressure		DL	SL			Max operating current(A)	Starting current/rotor locked current(A)			
4FC-3.2	3/2.2		18.05	4×∅41×39.3	∅16 5/8"	∅22 7/8"	2.0	380~ 420YY /3/50 440~ 480YY /3/60	9.2	44.2	120	离心 润滑 Centrifugal lubrication	82
4FC-5.2	5/3.7		18.05	4×∅41×39.3	∅16 5/8"	∅22 7/8"	2.0		10.8	62.2	120		86
4EC-4.2	4/3.0		22.72	4×∅46×39.3	∅16 5/8"	∅28 1-1/8"	2.0		10.7	53.5	120		84
4EC-6.2	6/4.4		22.72	4×∅46×39.3	∅16 5/8"	∅28 1-1/8"	2.0		13.2	62.2	120		86
4DC-5.2	5/3.7		26.84	4×∅50×39.3	∅22 7/8"	∅28 1-1/8"	2.0		13.5	62.2	120		85.5
4DC-7.2	7/5.1		26.84	4×∅50×39.3	∅22 7/8"	∅28 1-1/8"	2.0		15.9	82.4	120		88.5
4CC-6.2	6/4.4		32.48	4×∅55×39.3	∅22 7/8"	∅28 1-1/8"	2.0		15.9	82.4	120		90.5
4CC-9.2	9/6.6		32.48	4×∅55×39.3	∅22 7/8"	∅28 1-1/8"	2.0		20	82.4	120		90.5

参数表 PARAMETERS

Compressor type	Nominal motor power HP/KW	Displacement (50Hz)m ³ /h		Number of Cylinder × Diameter × Stroke(mm)	Aspirator, exhaust valve take-over		Oil injection volume(L)	Power supply V/∅/Hz	Electrical parameter		Crankcase Heater (220) W	Oil supply method	Weight (including freezing oil)Kg
		Low Pressure	High Pressure		DL	SL			Max operating current(A)	Starting current/rotor locked current(A)			
4VCS-6.2	6/4.4		34.73	4×∅55×42	∅22 7/8"	∅28 1-1/8"	2.6	380~ 420YY /3/50 440~ 480YY /3/60	14	39/68	120	离心 润滑 Centrifugal lubrication	129
4VCS-10.2	10/7.5		34.73	4×∅55×42	∅22 7/8"	∅28 1-1/8"	2.6		21	59/99	120		139
4TCS-8.2	8/5.5		41.33	4×∅60×42	∅28 1-1/8"	∅35 1-3/8"	2.6		17	49/81	120		134
4TCS-12.2	12/8.8		41.33	4×∅60×42	∅28 1-1/8"	∅35 1-3/8"	2.6		24	69/113	120		141
4PCS-10.2	10/7.5		48.5	4×∅65×42	∅28 1-1/8"	∅35 1-3/8"	2.6		21	59/99	120		139
4PCS-15.2	15/10.5		48.5	4×∅65×42	∅28 1-1/8"	∅42 1-5/8"	2.6		31	81/132	120		142
4NCS-12.2	12/8.8		56.25	4×∅70×42	∅28 1-1/8"	∅35 1-5/8"	2.6		24	69/113	120		141
4NCS-20.2	20/15		56.25	4×∅70×42	∅28 1-1/8"	∅42 1-5/8"	2.6		37	97/158	120		150

大四缸系列
BIG FOUR CYLINDER SERIES

六缸系列
SIX CYLINDER SERIES



参数表 PARAMETERS

Compressor type	Nominal motor power HP/KW	Displacement (50Hz)m ³ /h		Number of Cylinder × Diameter × Stroke(mm)	Aspirator, exhaust valve take-over		Oil injection volume(L)	Power supply V/∅/Hz	Electrical parameter		Crankcase Heater (220) W	Oil supply method	Weight (including freezing oil)Kg
		Low Pressure	High Pressure		DL	SL			Max operating current(A)	Starting current/rotor locked current(A)			
4H-15.2	15/10.5	73.6	73.6	4×∅70×55	∅28 1-1/8"	∅42 1-5/8"	4.5	380~420YY	31	81/132	140	油泵	197
4H-25.2	25/18.5	73.6	73.6	4×∅70×55	∅28 1-1/8"	∅54 2-1/8"	4.5	440~480YY	45	116/193	140	润滑	205
4G-20.2	20/15	84.5	84.5	4×∅75×55	∅28 1-1/8"	∅54 2-1/8"	4.5	480YY	37	97/158	140	强制-润滑	200
4G-30.2	30/22	84.5	84.5	4×∅75×55	∅28 1-1/8"	∅54 2-1/8"	4.5	480YY	53	135/22	140	强制-润滑	209

参数表 PARAMETERS

Compressor type	Nominal motor power HP/KW	Displacement (50Hz)m ³ /h		Number of Cylinder × Diameter × Stroke(mm)	Aspirator, exhaust valve take-over		Oil injection volume(L)	Power supply V/∅/Hz	Electrical parameter		Crankcase Heater (220) W	Oil supply method	Weight (including freezing oil)Kg
		Low Pressure	High Pressure		DL	SL			Max operating current(A)	Starting current/rotor locked current(A)			
6H-25.2	25/18.5	110.5	110.5	6×∅70×55	∅35 1-3/8"	∅54 2-1/8"	4.75	380~420YY	45	147/262	140	油泵	237
6H-35.2	35/25.5	110.5	110.5	6×∅70×55	∅35 1-3/8"	∅54 2-1/8"	4.75	420YY	62	116/193	140	润滑	248
6G-30.2	30/22	126.8	126.8	6×∅75×55	∅35 1-3/8"	∅54 2-1/8"	4.75	430YY	53	135/220	140	强制-润滑	241
6G-40.2	40/30	126.8	126.8	6×∅75×55	∅35 1-3/8"	∅54 2-1/8"	4.75	440~480YY	78	180/323	140	强制-润滑	247
6F-40.2	40/30	151.6	151.6	6×∅82×55	∅42 1-5/8"	∅54 2-1/8"	4.75	480YY	78	180/323	140	强制-润滑	243
6F-50.2	50/37	151.6	151.6	6×∅82×55	∅42 1-5/8"	∅54 2-1/8"	4.75	480YY	92	226/404	140	强制-润滑	248

性能参数表
Performance Parameter

频率 50Hz
吸气温度 20℃
液体无再冷

Frequency 50 Hz
relating to 20℃ suction gas
temperature, without liquid subcooling

R22

压缩机型号 Compressor type	冷凝温度 Cond temp (℃)	制冷量 Qo(W) 输入功率 Pe(kW)	制冷量 Cooling capacity Qo (kW)					输入功率 Power consumption Pe (kW)											
			蒸发温度 (℃) Evaporating temp (°C)																
			12.5	10	7.5	5	0	-5	-10	-15	-20	-25	-30	-35	-40				
2FC-2.2	30	Qo Pe						6.31	5.15	4.16	3.32	2.61	2.02	1.66	1.60	1.52	1.42	1.29	1.16
	40	Qo Pe						5.54	4.50	3.62	2.87	2.24	1.99	1.88	1.74	1.58	1.41		
	50	Qo Pe						4.78	3.86	3.08	2.26	2.09	1.90						
2FC-3.2	30	Qo Pe	12.12	11.10	10.16	9.28	7.69	6.33	5.15	4.16	3.31	2.60	2.02	1.73	1.73	1.72	1.72	1.69	
	40	Qo Pe	10.75	9.84	8.99	8.20	6.78	5.55	4.50	3.61	2.86	2.23	2.26	2.23	2.20	2.16	2.08		
	50	Qo Pe	9.40	8.59	7.84	7.14	5.88	4.79	3.87	3.08	2.29	2.13	1.95						
2DC-2.2	30	Qo Pe						9.09	7.39	5.93	4.69	3.64	2.76	2.32	2.22	2.09	1.92	1.73	1.53
	40	Qo Pe						7.98	6.45	5.15	4.03	3.10	2.74	2.57	2.36	2.13	1.88		
	50	Qo Pe						6.96	5.61	4.44	3.16	2.90	2.63						
2DC-3.2	30	Qo Pe	17.52	16.05	14.67	13.39	11.09	9.09	7.38	5.92	4.68	3.64	2.77	2.25	2.30	2.33	2.35	2.34	
	40	Qo Pe	15.54	14.22	12.99	11.84	9.27	7.99	6.45	5.14	4.03	3.10	2.96	2.96	2.94	2.91	2.82		
	50	Qo Pe	13.86	12.51	11.42	10.39	8.56	6.97	5.60	4.44	3.07	2.84	2.58						
2CC-3.2	30	Qo Pe						11.53	9.40	7.56	6.00	4.68	3.58	2.90	2.78	2.62	2.42	2.20	1.95
	40	Qo Pe						10.16	8.24	6.60	5.20	4.02	3.44	3.23	2.98	2.70	2.40		
	50	Qo Pe						8.90	7.20	5.74	3.98	3.67	3.34						
2CC-4.2	30	Qo Pe	22.07	20.24	18.52	16.92	14.04	11.55	9.41	7.58	6.03	4.72	3.62	2.82	2.88	2.92	2.95	2.95	
	40	Qo Pe	19.63	17.98	16.44	15.00	12.42	10.19	8.26	6.62	5.23	4.05	3.71	3.71	3.70	3.67	3.56		
	50	Qo Pe	17.32	15.86	14.49	13.22	10.92	8.93	7.22	5.76	3.91	3.62	3.30						
4FC-3.2	30	Qo Pe						12.44	10.10	8.09	6.39	4.95	3.75	3.12	2.99	2.80	2.58	2.32	2.04
	40	Qo Pe						10.86	8.76	6.96	5.44	4.15	3.66	3.42	3.13	2.82	2.48		
	50	Qo Pe						9.40	7.53	5.94	4.16	3.82	3.44						
4FC-5.2	30	Qo Pe	24.10	22.07	20.17	18.40	15.21	12.45	10.08	8.06	6.35	4.90	3.70	3.06	3.12	3.16	3.18	3.17	
	40	Qo Pe	21.36	19.53	17.81	16.22	13.35	10.87	8.74	6.93	5.39	4.11	3.97	3.97	3.95	3.91	3.78		
	50	Qo Pe	18.73	17.10	15.58	14.16	11.60	9.40	7.51	5.91	4.06	3.74	3.39						
4EC-4.2	30	Qo Pe						15.84	12.88	10.34	8.18	6.36	4.84	3.95	3.77	3.54	3.25	2.92	2.56
	40	Qo Pe						13.86	11.20	8.92	6.99	5.37	4.66	4.35	3.98	3.58	3.15		
	50	Qo Pe						12.03	9.66	7.65	5.34	4.90	4.41						

性能参数表
Performance Parameter

频率 50Hz
吸气温度 20℃
液体无再冷

Frequency 50 Hz
relating to 20℃ suction gas
temperature, without liquid subcooling

R22

压缩机型号 Compressor type	冷凝温度 Cond temp (℃)	制冷量 Qo(W) 输入功率 Pe(kW)	制冷量 Cooling capacity Qo (kW)					输入功率 Power consumption Pe (kW)											
			蒸发温度 (℃) Evaporating temp (°C)																
			12.5	10	7.5	5	0	-5	-10	-15	-20	-25	-30	-35	-40				
4EC-6.2	30	Qo Pe	30.46	27.89	25.50	23.27	19.26	15.80	12.82	10.27	8.12	6.31	4.80	3.85	3.93	3.99	4.02	4.01	
	40	Qo Pe	27.03	24.72	22.56	20.55	16.94	13.82	11.14	8.86	6.93	5.32	5.06	5.06	5.03	4.98	4.82		
	50	Qo Pe	23.73	21.68	19.76	17.98	14.76	11.99	9.61	7.59	6.19	6.11	6.00	5.88	5.58				
4DC-5.2	30	Qo Pe						18.30	14.91	12.01	9.54	7.45	5.71	4.53	4.34	4.08	3.76	3.39	2.99
	40	Qo Pe						16.06	13.01	10.41	8.19	6.33	5.35	5.01	4.61	4.16	3.68		
	50	Qo Pe						13.98	11.27	8.96	6.14	5.65	5.12						
4DC-7.2	30	Qo Pe	35.12	32.18	29.43	26.87	22.26	18.27	14.84	11.91	9.42	7.32	5.56	4.41	4.50	4.56	4.60	4.59	
	40	Qo Pe	31.20	28.55	26.08	23.77	19.61	16.02	12.94	10.30	8.08	6.20	5.77	5.77	5.74	5.69	5.52		
	50	Qo Pe	27.44	25.09	22.88	20.83	17.13	13.94	11.20	8.86	7.05	6.96	6.85	6.72	6.39				
4CC-6.2	30	Qo Pe						23.09	18.84	15.19	12.08	9.46	7.26	5.69	5.46	5.15	4.76	4.32	3.84
	40	Qo Pe						20.34	16.51	13.23	10.44	8.09	6.73	6.32	5.84	5.30	4.72		
	50	Qo Pe						17.78	14.37	11.46	7.74	7.16	6.52						
4CC-9.2	30	Qo Pe	44.02	40.35	36.92	33.72	27.97	22.98	18.70	15.03	11.92	9.30	7.10	5.54	5.67	5.75	5.80	5.80	
	40	Qo Pe	39.20	35.89	32.80	29.91	24.72	20.23	16.37	13.08	10.29	7.94	7.35	7.36	7.32	7.26	7.04		
	50	Qo Pe	34.57	31.62	28.87	26.30	21.67	17.68	14.25	11.32	9.09	8.98	8.83	8.66	8.24				
4VCS-6.2	30	Qo Pe						24.76	20.03	15.98	12.53	9.62	7.53	6.05	5.72	5.32	4.84	4.32	3.78
	40	Qo Pe						21.91	17.60	13.91	10.78	8.15	6.33	7.03	6.51	5.91	5.27	4.60	4.06
	50	Qo Pe						19.08	15.19	11.87	9.11	6.92	5.06	7.91	7.18	6.40	5.60	4.90	4.14
4VCS-10.2	30	Qo Pe	48.10	44.01	40.20	36.65	30.26	24.74	20.00	15.94	12.48	9.55	7.07	6.05	6.14	6.18	6.19	6.12	
	40	Qo Pe	43.28	39.54	36.05	32.79	26.95	21.90	17.27	13.88	10.74	8.09	7.71	7.67	7.61	7.51	7.22		
	50	Qo Pe	38.44	35.06	31.89	28.95	23.65	19.09	15.18	11.85	9.22	9.07	8.90	8.69	8.20				
4TCS-8.2	30	Qo Pe						29.85	24.19	19.33	15.19	11.68	9.27	7.28	6.91	6.43	5.87	5.25	4.67
	40	Qo Pe						26.51	21.34	16.92	13.16	9.98	7.72	8.50	7.89	7.19	6.43	5.64	5.04
	50	Qo Pe						23.19	18.52	14.53	11.24	8.57	6.30	9.61	8.75	7.84	7.04	6.13	5.26
4TCS-12.2	30	Qo Pe	57.53	52.66	48.11	43.87	36.26	29.68	24.02	19.18	15.07	11.57	8.62	7.30	7.41	7.47	7.49	7.40	
	40	Qo Pe	51.85	47.39	43.22	39.34	32.37	26.35	21.19	16.78	13.04	9.88	9.36	9.32	9.25	9.13	8.79		
	50	Qo Pe	46.16	42.12	38.34	34.83	28.51	23.06	19.39	14.41	11.25	11.08	10.87	10.63	10.04				

性能参数表
Performance Parameter

频率 50Hz
吸气温度 20℃
液体无再冷

Frequency 50 Hz
relating to 20℃ suction gas
temperature, without liquid subcooling

R22

压缩机型号 Compressor type	冷凝温度 Cond temp (℃)	制冷量 Qo(W) 输入功率 Pe(kW)	制冷量 Cooling capacity Qo (kW)					输入功率 Power consumption Pe (kW)																
			蒸发温度 (℃) Evaporating temperature (℃)																					
			12.5	10	7.5	5	0	-5	-10	-15	-20	-25	-30	-35	-40									
4PCS-10.2	30	Qo Pe						34.24	27.64	21.99	17.19	13.13	10.68											
	40	Qo Pe						30.23	24.22	19.08	14.73	11.06	8.98											
	50	Qo Pe						26.26	20.84	16.21	12.35	9.87	7.39											
4PCS-15.2	30	Qo Pe	66.87	61.17	55.85	50.90	42.01	34.33	27.73	22.10	17.30	13.25	9.82											
	40	Qo Pe	60.09	54.87	50.01	45.47	37.33	30.32	24.30	19.17	14.83	11.17												
	50	Qo Pe	53.29	48.57	44.17	40.06	32.69	26.34	20.91	16.30														
4NCS-12.2	30	Qo Pe						40.22	32.55	25.99	20.41	15.69	12.24											
	40	Qo Pe						35.64	28.65	22.68	17.61	13.34	10.37											
	50	Qo Pe						31.10	24.79	19.41	14.93	11.62	8.60											
4NCS-20.2	30	Qo Pe	78.18	71.57	65.40	59.65	49.32	40.41	32.74	26.19	20.62	15.90	11.90											
	40	Qo Pe	70.40	64.34	59.69	53.43	43.98	35.82	28.83	22.86	17.80	13.54												
	50	Qo Pe	62.59	57.11	52.00	47.23	38.66	31.28	24.96	19.58														
4H-15.2	30	Qo Pe						52.97	42.94	34.37	27.10	20.98	15.44											
	40	Qo Pe						49.76	37.70	29.97	23.44	17.95	13.00											
	50	Qo Pe						40.75	32.065	25.75	20.08	15.00	10.87											
4H-25.2	30	Qo Pe	103.18	94.48	86.37	78.81	65.22	53.48	43.39	34.75	27.39	21.14	15.86											
	40	Qo Pe	93.09	85.13	77.70	70.78	58.34	47.60	38.37	30.49	23.80	18.18												
	50	Qo Pe	82.99	75.78	69.05	62.78	51.49	41.76	33.41	26.30														
4G-20.2	30	Qo Pe						62.05	50.56	40.74	32.41	25.38	17.88											
	40	Qo Pe						55.10	44.71	35.84	28.33	22.02	15.02											
	50	Qo Pe						48.36	39.05	31.13	24.48	17.60	12.54											
4G-30.2	30	Qo Pe	118.55	108.58	99.29	90.62	75.06	61.61	50.05	40.16	31.74	24.60	18.56											
	40	Qo Pe	107.08	97.96	89.44	81.51	67.25	54.94	44.37	35.35	27.70	21.23												
	50	Qo Pe	95.60	87.34	79.62	72.34	59.49	48.33	38.76	30.61														
6H-25.2	30	Qo Pe						80.14	65.06	52.15	41.18	31.92	23.20											
	40	Qo Pe						70.94	57.31	45.66	35.79	27.47	19.41											
	50	Qo Pe						62.04	49.83	39.43	31.03	22.60	16.18											

性能参数表
Performance Parameter

频率 50Hz
吸气温度 20℃
液体无再冷

Frequency 50 Hz
relating to 20℃ suction gas
temperature, without liquid subcooling

R22

压缩机型号 Compressor type	冷凝温度 Cond temp (℃)	制冷量 Qo(W) 输入功率 Pe(kW)	制冷量 Cooling capacity Qo (kW)					输入功率 Power consumption Pe (kW)																
			蒸发温度 (℃) Evaporating temperature (℃)																					
			12.5	10	7.5	5	0	-5	-10	-15	-20	-25	-30	-35	-40									
6H-35.2	30	Qo Pe	154.45	141.44	129.31	118.00	97.68	80.14	65.05	52.15	41.16	31.84	23.96											
	40	Qo Pe	139.35	127.44	116.33	105.98	87.38	71.32	57.54	45.78	35.79	27.36												
	50	Qo Pe	124.23	113.45	103.38	94.00	77.13	62.59	50.11	39.49														
6G-30.2	30	Qo Pe						92.70	75.47	60.74	48.23	37.67	26.79											
	40	Qo Pe						82.15	66.57	53.28	42.01	32.53	22.57											
	50	Qo Pe						71.94	57.99	46.11	35.97	26.27	18.87											
6G-40.2	30	Qo Pe	177.08	162.13	148.19	135.20	111.85	91.69	74.35	59.52	46.90	36.20	27.15											
	40	Qo Pe	159.75	146.07	133.30	121.40	100.03	81.58	65.74	52.23	40.75	31.07												
	50	Qo Pe	142.41	130.02	118.45	107.67	88.28	71.57	57.23	45.02														
6F-40.2	30	Qo Pe						110.74	90.03	72.30	57.22	44.48	32.11											
	40	Qo Pe						98.29	79.55	63.54	49.96	38.51	27.22											
	50	Qo Pe						86.23	69.44	55.13	43.58	31.81	22.96											
6F-50.2	30	Qo Pe	213.11	195.19	178.48	162.90	134.89	110.68	89.84	72.00	56.79	43.86	32.90											
	40	Qo Pe	192.45	176.05	160.75	146.48	120.82	98.66	79.62	63.34	49.51	37.80												
	50	Qo Pe	171.77	153.91	143.04	130.10	106.84	86.75	69.50	54.79														

运行注意事项请见第 2 页应用范围的技术措施

Note for the operation issues, please check the technical measures of application range on Page 2.

性能参数表
Performance Parameter

频率 50Hz
Frequency 50 Hz
吸气温度 20°C
relating to 20°C suction gas
液体无再冷
temperature, without liquid subcooling

R404A/R507A

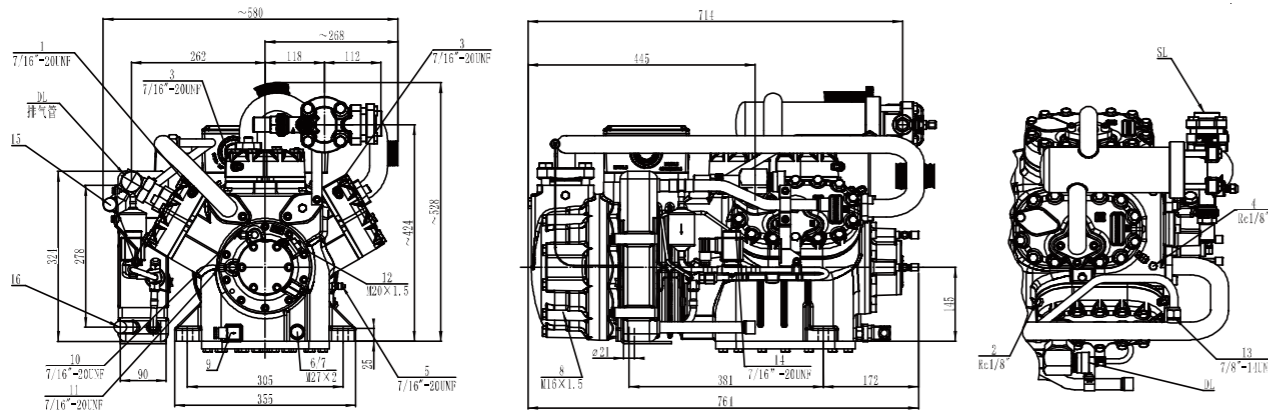
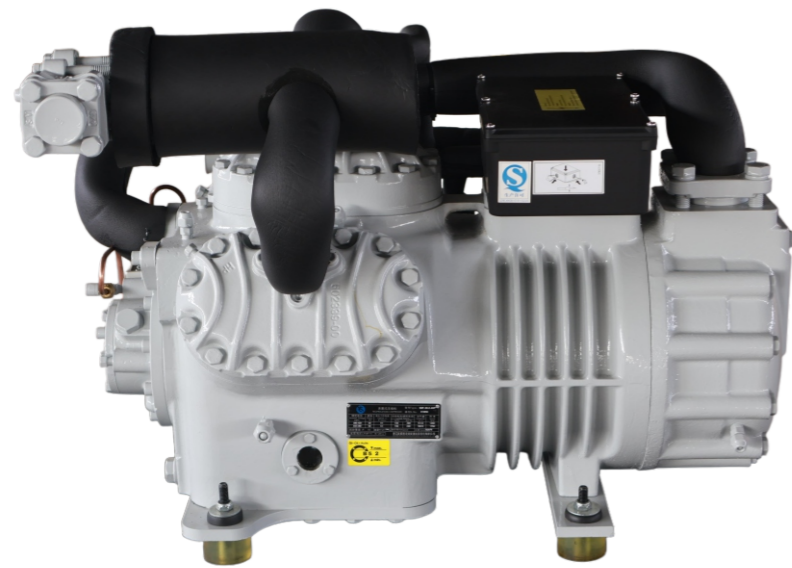
压缩机型号 Compressor type	冷凝温度 Cond temp (°C)	制冷量 Qo(W) 输入功率 Pe(kW)	制冷量 Cooling capacity Qo (kW)					输入功率 Power consumption Pe (kW)						
			蒸发温度 (°C) Evaporating temperatue (°C)											
			7.5	5	0	-5	-10	-15	-20	-25	-30	-35	-40	-45
4PCS-10.2	30	Qo			46.54	38.24	31.09	24.96	19.76	15.38	11.71			
		Pe			9.80	9.38	8.82	8.14	7.37	6.54	5.68			
	40	Qo			39.27	32.04	25.82	20.50	16.01	12.25	9.15			
		Pe			11.51	10.76	9.88	8.92	7.89	6.84	5.78			
	50	Qo			31.81	25.73	20.50	16.05	12.31	9.21	6.68			
		Pe			12.91	11.83	10.66	9.43	8.17	6.92	5.69			
4PCS-15.2	30	Qo	61.92	56.47	46.69	38.25	31.01	24.83	19.61	15.22	11.56			
		Pe	10.03	10.00	9.77	9.36	8.79	8.11	7.33	6.49	5.62			
	40	Qo	52.45	47.74	39.26	31.93	25.66	20.32	15.83	12.09	8.99			
		Pe	12.20	11.98	11.38	10.64	9.78	8.82	7.80	6.76	5.71			
	50	Qo	42.80	38.86	31.76	25.63	20.37	15.92	12.19	9.11	6.59			
		Pe	14.10	13.68	12.75	11.70	10.56	9.35	8.13	6.90	5.70			
4NCS-12.2	30	Qo			54.55	44.96	36.69	29.61	23.58	18.50	14.25			
		Pe			11.61	11.18	10.57	9.81	8.94	8.00	7.01			
	40	Qo			46.37	38.00	30.78	24.61	19.39	15.00	11.36			
		Pe			13.78	12.94	11.97	10.88	9.71	8.49	7.27			
	50	Qo			37.77	30.73	24.65	19.47	15.10	11.47	8.48			
		Pe			15.50	14.30	12.97	11.57	10.12	8.66	7.22			
4NCS-20.2	30	Qo	72.67	66.35	55.00	45.20	36.80	29.63	23.56	18.47	14.21			
		Pe	11.72	11.70	11.47	11.02	10.40	9.64	8.78	7.85	6.89			
	40	Qo	61.84	56.37	46.52	38.01	30.72	24.51	19.29	14.92	11.31			
		Pe	14.33	14.09	13.44	12.62	11.66	10.60	9.47	8.32	7.17			
	50	Qo	50.75	46.18	37.93	30.79	24.67	19.48	15.13	11.52	8.56			
		Pe	16.67	16.22	15.19	14.02	12.75	11.42	10.05	8.70	7.39			
4H-15.2	30	Qo			71.47	59.40	48.92	39.84	32.04	25.37	19.71			
		Pe			15.70	15.06	14.23	13.25	12.15	10.96	9.72			
	40	Qo			61.14	50.57	41.39	33.46	26.66	20.88	16.00			
		Pe			18.55	17.40	16.12	14.72	13.25	11.74	10.21			
	50	Qo			50.36	41.43	33.65	26.94	21.22	16.38	12.33			
		Pe			20.99	19.37	17.65	15.87	14.05	12.24	10.46			
4H-25.2	30	Qo	93.03	85.25	71.20	58.99	48.42	39.33	31.55	24.92	19.29			
		Pe	15.68	15.57	15.18	14.58	13.79	12.86	11.80	10.66	9.46			
	40	Qo	79.71	72.95	60.71	50.06	40.83	32.90	26.13	20.39	15.54			
		Pe	19.02	18.65	17.77	16.71	15.51	14.20	12.80	11.35	9.88			
	50	Qo	65.65	59.99	49.72	40.75	32.99	26.32	20.65	15.86	11.85			
		Pe	21.88	21.27	19.93	18.45	16.86	15.19	13.48	11.75	10.03			
4G-20.2	30	Qo			82.52	68.72	56.72	46.35	37.44	29.83	23.37			
		Pe			18.75	17.91	16.86	15.65	14.31	12.88	11.41			
	40	Qo			70.65	58.60	48.12	39.08	31.34	24.76	19.21			
		Pe			22.18	20.74	19.16	17.46	15.69	13.88	12.09			
	50	Qo			58.17	48.02	39.20	31.59	25.10	19.62	15.03			
		Pe			25.15	23.15	21.06	18.90	16.74	14.59	12.50			
4G-30.2	30	Qo	106.57	97.68	81.64	67.71	55.66	45.30	36.44	28.91	22.53			
		Pe	18.37	18.20	17.68	16.93	15.98	14.87	13.63	12.29	10.90			
	40	Qo	91.16	83.47	69.55	57.44	46.96	37.97	30.29	23.79	18.30			
		Pe	22.08	21.63	20.58	19.34	17.94	16.41	14.79	13.12	11.43			
	50	Qo	74.82	68.42	56.80	46.67	37.91	30.39	24.00	18.61	14.10			
		Pe	25.22	24.52	22.97	21.28	19.46	17.55	15.60	13.63	11.67			
6H-25.2	30	Qo			104.84	87.20	71.85	58.59	47.19	37.46	29.19			
		Pe			22.98	22.10	20.92	19.49	17.86	16.08	14.22			
	40	Qo			89.71	74.25	60.81	49.21	39.27	30.82	23.70			
		Pe			27.05	25.50	23.69	21.68	19.52	17.27	14.98			
	50	Qo			74.04	60.94	49.54	39.70	31.30	24.19	18.24			
		Pe			30.63	28.41	25.99	23.41	20.74	18.03	15.32			

性能参数表
Performance Parameter

频率 50Hz
Frequency 50 Hz
吸气温度 20°C
relating to 20°C suction gas
液体无再冷
temperature, without liquid subcooling

R404A/R507A

压缩机型号 Compressor type	冷凝温度 Cond temp (°C)	制冷量 Qo(W) 输入功率 Pe(kW)	制冷量 Cooling capacity Qo (kW)					输入功率 Power consumption Pe (kW)						
			蒸发温度 (°C) Evaporating temperatue (°C)											
			7.5	5	0	-5	-10	-15	-20	-25	-30	-35	-40	-45
6H-35.2	30	Qo	136.43	125.02	104.42	86.52	71.03	57.70	46.30	36.60	28.38			
		Pe	22.99	22.89	22.39	21.57	20.46	19.11	17.58	15.90	14.13			
	40	Qo	116.89	106.98	89.09	73.41	59.89	48.27	38.35	29.93	22.84			
		Pe	27.77	27.33	26.19	24.76	23.09	21.21	19.19	17.06	14.88			
	50	Qo	96.47	88.16	73.08	59.90	48.49	38.69	30.33	23.28	17.37			
		Pe	32.02	31.25	29.48	27.46	25.23	22.84	20.34	17.78	15.20			
6G-30.2	30	Qo			121.34	101.28	83.84	68.75	55.77	44.67	35.24			
		Pe			27.73	26.55	25.07	23.34	21.42	19.38	17.26			
	40	Qo			103.83	86.43	71.28	58.18	46.93	37.34	29.22			
		Pe			32.68	30.75	28.57	26.20	23.69	21.12	18.52			
	50	Qo			85.75	71.13	58.38	47.35	37.89	29.85	23.06			
		Pe			37.31	34.61	31.71	28.69	25.59	22.48	19.40			
6G-40.2	30	Qo	155.23	142.32	119.00	98.72	81.17	66.06	53.12	42.11	32.78			
		Pe	27.31	27.08	26.33	25.25	23.89	22.29	20.50	18.58	16.56			
	40	Qo	132.17	121.09	101.01	83.52	68.37	55.31	44.15	34.66	26.63			
		Pe	32.45	31.87	30.46	28.75	26.79	24.64	22.34	19.93	17.47			
	50	Qo	108.34	99.16	82.49	67.91	55.25	44.35	35.03	27.12	20.44			
		Pe	37.14	36.21	34.12	31.78	29.23	26.52	23.69	20.80	17.90			
6F-40.2	30	Qo			145.63	121.40	100.30	82.04	66.32	52.87	41.41			
		Pe			33.52	32.26	30.59	28.60	26.34	23.90	21.33			
	40	Qo			124.45	103.48	85.20	69.36	55.73	44.06	34.13			
		Pe			39.06	36.92	34.43	31.67	28.71	25.62	22.47			
	50	Qo			102.40	84.85	69.52	56.21	44.75	34.95	26.62			
		Pe			43.80	40.81	37.53	34.05	30.42	26.72	23.01			
6F-50.2	30	Qo	188.15	172.57	144.44	119.98	98.82	80.60	65.01	51.74	40.49			
		Pe	33.66	33.44	32.61	31.32	29.65	27.65	25.40	22.96	20.39			
	40	Qo	160.20	146.88	122.78	101.76	83.53	67.80	54.33	42.83	33.07			
		Pe	40.29	39.58	37.83	35.67	33.19	30.44	27.49	24.40	21.25			
	50	Qo	131.00	120.06	100.16	82.73	67.58	54.48	43.24	33.64	25.49			
		Pe	46.01	44.83	42.18	39.19	35.93	32.45	28.83	25.14	21.43			



参数表 PARAMETERS

Compressor type	Nominal motor power HP/KW	Displacement (50Hz)m ³ /h		Number of Cylinder × Diameter × Stroke(mm)	Aspirator, exhaust valve take-over		Oil injection volume(L)	Power supply V/∅/Hz	Electrical parameter		Crankcase Heater (220) W	Oil supply method	Weight (including freezing oil)Kg		
		Low Pressure	High Pressure		DL	SL			Max operating current(A)	Starting current/rotor locked current(A)					
S6G-12.2	12/9.3	42.3	27.0	6×∅65×55	∅28 1-1/8"	∅35 1-3/8"	3.5	380~420YY /3/50 440~480YY /3/60	24	69/113	120	油泵	180		
S6J-16.2	16/12.5	63.5	31.8	6×∅65×55	∅28 1-1/8"	∅42 1-5/8"	3.5		31	81/132	120			润滑	209
S6H-20.2	20/15	73.6	36.9	6×∅70×55	∅28 1-1/8"	∅42 1-5/8"	3.5		37	97/158	120	Forced-lubrication	220		
S6G-25.2	25/19	84.5	42.3	6×∅75×55	∅28 1-1/8"	∅42 1-5/8"	3.5		45	116/193	120				
S6F-30.2	30/22	101.3	50.5	6×∅82×55	∅28 1-1/8"	∅42 1-5/8"	3.5		53	135/220	120	234			

性能参数表
Performance Parameter

频率 50Hz
吸气温度 20℃
液体再冷

Frequency 50 Hz
relating to 20℃ suction gas
temperature, liquid re-cooling

R22

压缩机型号 Compressor type	冷凝温度 Cond temp (°C)	制冷量 Cooling capacity Qo (kW)							输入功率 Power consumption Pe (kW)						
		蒸发温度 (°C) Evaporating temperature (°C)													
		-20	-25	-30	-35	-40	-45	-50	-20	-25	-30	-35	-40	-45	-50
S4G-12.2	30	21.35	17.73	14.55	11.77	9.34	7.24	5.41	8.82	8.22	7.63	7.03	6.43	5.84	5.24
	35	20.95	17.43	14.30	11.56	9.15	7.06	5.23	9.49	8.83	8.17	7.51	6.85	6.82	5.53
	40	20.60	17.14	14.06	11.35	8.96	6.88	5.04	10.16	9.43	8.71	7.99	7.26	6.54	5.81
	45	20.25	168.50	138.20	11.14	8.78	6.69	10.82	10.04	9.25	8.46	7.68	6.89		
	50	19.92	16.57	13.59	10.94	8.58	11.47	10.63	9.78	8.93	8.09				
	55	19.59	16.30	13.36	10.73	12.09	11.19	10.28	9.38						
S6J-16.2	30	30.65	25.60	21.15	17.23	13.77	10.70	7.95	13.34	12.26	11.17	10.08	8.98	7.90	6.82
	35	30.30	25.35	20.95	17.05	13.59	10.49	7.66	14.26	13.09	11.90	10.72	9.53	8.36	7.19
	40	30.00	25.10	20.75	16.87	13.42	10.30	7.41	15.19	13.91	12.63	11.35	10.07	8.79	7.52
	45	29.65	24.85	20.55	16.71	13.26	10.11	16.11	14.73	13.35	11.97	10.58	9.17		
	50	29.35	24.60	20.35	16.57	13.13	17.03	15.53	14.05	12.57	11.05				
	55	29.10	24.40	20.20	16.46	17.94	16.33	14.74	13.14						
S6H-20.2	30	35.50	29.70	24.50	19.97	15.96	12.40	9.18	15.46	14.21	12.95	11.68	10.41	9.15	7.91
	35	35.15	29.40	24.30	19.76	15.75	12.16	8.88	16.53	15.17	13.79	12.42	11.05	9.69	8.34
	40	34.75	29.10	24.05	19.56	15.56	11.94	8.59	17.61	16.12	14.64	13.15	11.67	10.19	8.71
	45	34.40	28.80	23.80	19.37	15.37	11.72	18.68	17.07	15.47	13.87	12.26	10.63		
	50	34.05	28.50	23.60	19.21	15.22	19.74	18.00	16.29	14.56	12.80				
	55	33.70	28.30	23.40	19.07	20.79	18.92	17.09	15.23						
S6G-25.2	30	40.80	34.05	28.15	22.90	18.32	14.23	10.54	17.75	16.31	14.86	13.41	11.95	10.51	9.08
	35	40.35	33.75	27.90	22.70	18.09	13.96	10.20	18.98	17.41	15.84	14.26	12.68	11.12	9.57
	40	39.90	33.40	27.60	22.45	17.86	13.70	9.86	20.21	18.51	16.81	15.10	13.40	11.70	10.00
	45	39.50	33.05	27.35	22.25	17.65	13.46	21.44	19.60	17.76	15.92	14.07	12.20		
	50	39.10	32.75	27.10	22.05	17.47	22.66	20.67	18.70	16.72	14.70				
	55	38.70	32.45	26.90	21.90	23.87	21.73	19.62	17.48						
S6F-30.2	30	48.80	40.75	33.70	27.40	21.90	17.03	12.61	21.23	19.52	17.78	16.04	14.30	12.57	10.86
	35	48.25	40.35	33.35	27.15	21.65	16.71	12.20	22.71	20.83	18.95	17.06	15.18	13.31	11.45
	40	47.75	39.95	33.00	26.85	21.35	16.39	11.79	24.18	22.15	20.11	18.07	16.03	13.99	11.96
	45	47.25	39.55	32.70	26.60	21.10	16.10	25.66	23.45	21.25	19.05	16.84	14.60		
	50	46.75	39.20	32.45	26.40	20.90	27.12	24.73	22.37	20.01	17.59				
	55	46.30	38.85	32.20	26.20	28.56	25.99	23.47	20.92						

性能参数表
Performance Parameter

频率 50Hz
吸气温度 20℃
液体无再冷

Frequency 50 Hz
relating to 20℃ suction gas
temperature, without liquid subcooling

R22

压缩机型号 Compressor type	冷凝温度 Cond temp (℃)	制冷量 Cooling capacity Qo (kW)								输入功率 Power consumption Pe (kW)														
		蒸发温度 (℃) Evaporating temperature (℃)								蒸发温度 (℃) Evaporating temperature (℃)														
		-20	-25	-30	-35	-40	-45	-50		-20	-25	-30	-35	-40	-45	-50								
S4G-12.2	30	18.37	14.95	12.02	9.53	7.43	5.67	4.18	8.32	7.66	7.01	6.37	5.75	5.16	4.61		8.32	7.66	7.01	6.37	5.75	5.16	4.61	
	35	17.60	14.31	11.50	9.11	7.08	5.37	3.92	8.87	8.16	7.45	6.76	6.08	5.42	4.79		8.87	8.16	7.45	6.76	6.08	5.42	4.79	
	40	16.83	13.68	10.98	8.68	6.73	5.07	3.65	9.45	8.68	7.92	7.16	6.42	5.69	4.97		9.45	8.68	7.92	7.16	6.42	5.69	4.97	
	45	16.06	13.04	10.46	8.26	6.38	4.77		10.06	9.22	8.39	7.56	6.74	5.93		10.06	9.22	8.39	7.56	6.74	5.93			
	50	15.29	12.42	9.95	7.83	6.02			10.70	9.77	8.85	7.93	7.03			10.70	9.77	8.85	7.93	7.03				
55	14.52	11.78	9.43	7.41				11.37	10.31	9.27	8.26				11.37	10.31	9.27	8.26						
S6J-16.2	30	27.90	22.75	18.35	14.57	11.34	8.57	6.17	10.94	10.32	9.62	8.83	7.93	6.92	5.78		10.94	10.32	9.62	8.83	7.93	6.92	5.78	
	35	26.80	21.85	17.62	13.98	10.85	8.15	5.79	11.88	11.14	10.33	9.41	8.40	7.26	6.01		11.88	11.14	10.33	9.41	8.40	7.26	6.01	
	40	25.70	20.95	16.89	13.39	10.37	7.74	5.42	12.81	11.99	11.06	10.02	8.87	7.58	6.17		12.81	11.99	11.06	10.02	8.87	7.58	6.17	
	45	24.55	20.05	16.16	12.81	9.90	7.35		13.74	12.84	11.81	10.65	9.33	7.85		13.74	12.84	11.81	10.65	9.33	7.85			
	50	23.40	19.14	15.45	12.24	9.44			14.64	13.69	12.57	11.28	9.78			14.64	13.69	12.57	11.28	9.78				
55	22.30	18.24	14.74	11.69				15.52	14.52	13.34	11.92				15.52	14.52	13.34	11.92						
S6H-20.2	30	32.35	26.40	21.25	16.89	13.14	9.93	7.15	12.68	11.96	11.15	10.23	9.19	8.02	6.70		12.68	11.96	11.15	10.23	9.19	8.02	6.70	
	35	31.05	25.35	20.40	16.20	12.58	9.45	6.71	13.77	12.92	11.97	10.91	9.73	8.42	6.96		13.77	12.92	11.97	10.91	9.73	8.42	6.96	
	40	29.75	24.30	19.57	15.52	12.02	8.98	6.28	14.85	13.89	12.82	11.62	10.28	8.79	7.15		14.85	13.89	12.82	11.62	10.28	8.79	7.15	
	45	28.45	23.25	18.73	14.84	11.47	8.51		15.92	14.88	13.69	12.34	10.81	9.10		15.92	14.88	13.69	12.34	10.81	9.10			
	50	27.15	22.20	17.90	14.19	10.95			16.97	15.86	14.57	13.07	11.33			16.97	15.86	14.57	13.07	11.33				
55	25.80	21.15	17.09	13.55				17.99	16.83	15.46	13.81				17.99	16.83	15.46	13.81						
S6G-25.2	30	37.15	30.30	24.40	19.39	15.09	14.41	8.21	14.55	13.73	12.80	11.75	10.55	9.21	7.69		14.55	13.73	12.80	11.75	10.55	9.21	7.69	
	35	35.65	29.10	23.45	18.60	14.44	10.85	7.70	15.81	14.83	13.74	12.53	11.17	9.67	7.99		15.81	14.83	13.74	12.53	11.17	9.67	7.99	
	40	34.15	27.90	22.50	17.82	13.80	10.31	7.21	17.05	15.95	14.72	13.34	11.80	10.09	8.21		17.05	15.95	14.72	13.34	11.80	10.09	8.21	
	45	32.65	26.70	21.50	17.04	13.17	9.78		18.28	17.08	15.72	14.17	12.42	10.45		18.28	17.08	15.72	14.17	12.42	10.45			
	50	31.15	25.45	20.55	16.29	12.57			19.59	18.21	16.73	15.01	13.01			19.59	18.21	16.73	15.01	13.01				
55	29.65	24.30	19.62	15.56				20.65	19.32	17.75	15.86				20.65	19.32	17.75	15.86						
S6F-30.2	30	44.45	36.25	29.20	23.20	18.06	13.65	9.82	17.41	16.43	15.32	14.06	12.63	11.02	9.20		17.41	16.43	15.32	14.06	12.63	11.02	9.20	
	35	42.70	34.80	28.05	22.25	17.28	12.98	9.22	18.91	17.74	16.44	14.99	13.37	11.56	9.56		18.91	17.74	16.44	14.99	13.37	11.56	9.56	
	40	40.90	33.35	26.90	21.30	16.51	12.22	8.63	20.40	19.09	17.61	15.96	14.12	12.07	9.82		20.40	19.09	17.61	15.96	14.12	12.07	9.82	
	45	39.10	31.90	25.70	20.40	15.76	11.70		21.87	20.44	18.80	16.95	14.85	12.50		21.87	20.44	18.80	16.95	14.85	12.50			
	50	37.25	30.40	24.60	19.49	15.04			23.31	21.79	20.02	17.96	15.57			23.31	21.79	20.02	17.96	15.57				
55	35.45	29.05	23.50	18.61				24.71	23.11	21.23	18.97				24.71	23.11	21.23	18.97						

性能参数表
Performance Parameter

频率 50Hz
吸气温度 20℃
液体再冷

Frequency 50 Hz
relating to 20℃ suction gas
temperature, liquid re-cooling

R404A/R507A

压缩机型号 Compressor type	冷凝温度 Cond temp (℃)	制冷量 Cooling capacity Qo (kW)										输入功率 Power consumption Pe (kW)									
		蒸发温度 (℃) Evaporating temperature (℃)										蒸发温度 (℃) Evaporating temperature (℃)									
		-25	-30	-35	-40	-45	-50	-55	-60	-65	-70	-25	-30	-35	-40	-45	-50	-55	-60	-65	-70
S4G-12.2	30	19.49	16.83	14.28	11.86	9.65	7.68	5.98	4.57	3.41	2.49	9.74	9.06	8.35	7.61	6.85	6.10	5.35	4.62	3.92	3.27
	35	19.26	16.57	14.00	11.60	9.43	7.51	5.87	4.48	3.34	2.42	10.39	9.64	8.86	8.05	7.22	6.40	5.59	4.81	4.06	3.37
	40	18.92	16.23	13.69	11.34	9.22	7.36	5.76	4.40	3.25		11.05	10.23	9.37	8.49	7.60	6.72	5.85	5.01	4.22	
	45	18.52	15.86	13.37	11.08	9.03	7.23	5.66	4.29			11.70	10.82	9.90	8.96	8.00	7.05	6.12	5.22		
	50	18.07	15.48	13.06	10.85	8.86	7.10	5.54				11.32	11.40	10.44	9.44	8.42	7.41	6.41			
55	17.61	15.10	12.77	10.64	8.71	6.97					12.90	11.98	10.99	9.94	8.87	7.78					
S6J-16.2	30	27.60	23.75	20.15	16.81	13.76	11.03	8.66	6.65	4.99	3.66	14.13	12.93	11.76	10.61	9.49	8.41	7.37	6.40	5.49	4.65
	35	27.10	23.30	19.74	16.46	13.46	10.80	8.49	6.53	4.90	3.58	15.05	13.74	12.48	12.24	10.06	8.91	7.82	6.78	5.80	4.89
	40	26.50	22.80	19.34	16.11	13.18	10.58	8.33	6.41	4.79		16.00	14.58	13.21	11.90	10.63	9.42	8.26	7.16	6.10	
	45	26.00	22.35	18.92	15.77	12.92	10.38	8.19	6.27			16.94	15.42	13.96	12.56	11.21	9.93	8.69	7.51		
	50	25.50	21.90	18.52	15.44	12.67	10.21	8.02				17.83	16.23	14.68	13.20	11.78	10.41	9.10			
55	25.00	21.50	18.16	15.15	12.45	10.02					18.74	17.07	15.44	13.87	12.33	10.87					
S6H-20.2	30	31.90	27.45	23.30	19.44	15.91	12.76	10.02	7.69	5.77	4.23	16.43	15.02	13.64	12.30	11.00	9.76	8.57	7.44	6.40	5.40
	35	31.30	26.95	22.85	19.03	15.56	12.48	9.19	7.56	5.67	4.14	17.47	15.95	14.47	13.04	11.66	10.33	9.07	7.86	6.72	5.66
	40	30.60	26.35	22.35	18.61	15.23	12.24	9.64	7.42	5.54		18.53	16.90	15.32	13.79	12.33	10.92	9.57	8.29	7.07	
	45	29.90	25.75	21.85	18.20	14.92	12.01	9.47	7.26			19.60	17.85	16.17	14.55	12.99	11.50	10.07	8.70		
	50	29.35	25.20	21.35	17.81	14.63	11.80	9.28				20.63	18.79	17.01	15.30	13.65	12.07	10.55			
55	28.80	24.70	20.90	17.45	14.36	11.57					21.66	19.69	17.83	16.03	14.29	12.61					
S6G-25.2	30	36.20	31.30	26.60	22.25	18.22	14.62	11.48	8.83	6.63	4.87	18.84	17.27	15.71	14.16	12.65	11.19	9.80	8.49	7.29	6.20
	35	35.60	30.70	26.10	21.75	17.81	14.30	11.25	8.66	6.51	4.76	20.02	18.32	16.64	15.00	13.41	11.87	10.41	9.02	7.72	6.51
	40	34.90	30.10	25.50	21.30	17.42	14.00	11.04	8.50	6.35		21.27	19.40	17.60	15.85	14.16	12.55	11.00	9.52	8.13	
	45	34.10	29.40	24.95	20.80	17.06	13.74	10.84	8.31			22.52	20.50	18.56	16.70	14.92	13.20	11.56	10.00		
	50	33.45	28.75	24.35	20.35	16.72	13.49	10.62				23.71	21.58	19.35	17.56	15.67	13.85	12.10			
55	32.90	28.15	23.80	19.92	16.41	13.23					24.78	22.61	20.49	18.42	16.42	14.47					
S6F-30.2	30	43.40	37.40	31.75	26.50	21.70	17.42	13.69	10.54	7.92	5.80	22.53	20.65	18.78	16.94	15.15	13.42	11.77	10.20	8.74	7.40
	35	42.50	36.60																		

性能参数表
Performance Parameter

频率 50Hz
吸气温度 20℃
液体无再冷

Frequency 50 Hz
relating to 20℃ suction gas
temperature, without liquid subcooling

R404A/R507A

压缩机型号 Compressor type	冷凝温度 Cond temp (℃)	制冷量 Cooling capacity Qo (kW)										输入功率 Power consumption Pe (kW)									
		蒸发温度 (℃)										Evaporating temperatue (℃)									
		-25	-30	-35	-40	-45	-50	-55	-60	-65	-70	-25	-30	-35	-40	-45	-50	-55	-60	-65	-70
S4G-12.2	30	15.86	13.27	10.91	8.80	6.96	5.39	4.09	3.05	2.22	1.59	9.02	8.28	7.55	6.83	6.11	5.40	4.69	3.98	3.27	2.57
	35	15.06	12.54	10.27	8.26	6.52	5.05	3.84	2.86	5.09	1.48	9.45	8.66	7.88	7.11	6.34	5.57	4.82	4.07	3.32	2.59
	40	14.16	11.76	9.61	7.71	6.09	4.72	3.57	2.68	1.93	9.87	9.04	8.21	7.38	6.56	5.75	4.95	4.15	3.37		
	45	13.20	10.94	8.92	7.17	5.66	4.40	3.35	2.47	10.29	9.42	8.54	7.67	6.80	5.94	5.08	4.25				
	50	12.18	10.08	8.23	6.62	5.24	4.07	3.08	10.72	9.81	8.89	7.97	7.05	6.14	5.24						
S6J-16.2	30	23.95	19.94	16.35	13.19	10.44	8.10	6.15	4.57	3.33	2.37	13.07	11.70	10.43	9.25	8.17	7.18	6.27	5.44	4.69	4.00
	35	22.65	18.79	15.38	12.38	9.78	7.57	5.77	4.30	3.12	2.21	13.63	12.22	10.91	9.68	8.54	7.48	6.50	5.60	4.78	4.04
	40	21.25	17.60	14.28	11.56	9.13	7.09	5.40	4.02	2.90	14.17	12.77	11.42	10.15	8.95	7.81	6.76	5.78	4.89		
	45	19.76	16.36	13.36	10.74	8.49	6.60	5.02	3.72	14.73	13.33	11.96	10.64	9.38	8.18	7.04	5.98				
	50	18.23	15.09	12.32	9.91	7.85	6.10	4.63	15.30	13.90	12.51	11.15	9.83	8.56	7.34						
S6H-20.2	30	27.70	23.10	18.96	15.30	12.11	9.38	7.13	5.30	3.85	2.74	15.36	13.69	12.15	10.73	9.44	8.27	7.23	6.32	5.53	4.86
	35	26.20	21.80	17.84	14.36	11.34	8.79	6.69	4.98	3.62	2.56	16.04	14.33	12.73	11.26	9.90	8.67	7.56	6.57	5.71	4.97
	40	24.60	20.40	16.68	13.40	10.59	8.22	6.26	4.66	3.36	16.70	14.96	13.32	11.79	10.38	9.08	7.89	6.82	5.87		
	45	22.90	18.97	15.49	12.45	9.84	7.65	5.82	4.31	17.35	15.58	13.91	12.34	10.88	9.51	8.24	7.08				
	50	21.10	17.49	14.28	11.49	9.10	7.07	5.37	18.00	16.21	14.52	12.92	11.41	9.98	8.63						
S6G-25.2	30	31.80	26.50	21.75	17.57	13.90	10.78	8.18	6.09	4.43	3.15	17.92	15.88	14.03	12.35	10.84	9.49	8.30	7.25	6.34	5.56
	35	30.10	25.00	20.5	16.48	13.02	10.10	7.68	5.72	4.16	2.94	18.51	16.49	14.63	12.91	11.35	9.93	8.66	7.54	6.56	5.72
	40	28.25	23.40	19.14	15.39	12.15	9.43	7.18	5.34	3.86	19.12	17.14	15.27	13.52	11.89	10.40	9.04	7.83	6.77		
	45	26.30	21.80	17.78	14.29	11.30	8.78	6.68	4.95	19.74	17.81	15.95	14.16	12.47	10.89	9.43	8.12				
	50	24.30	20.05	16.39	13.19	10.44	8.12	6.16	20.40	18.51	16.63	14.81	13.05	11.38	9.82						
S6F-30.2	30	38.05	31.70	26.05	21.00	16.62	12.88	9.79	7.28	5.30	3.76	21.26	18.81	16.61	14.64	12.90	11.37	10.02	8.86	7.85	7.00
	35	36.00	29.95	24.50	19.71	15.57	12.07	9.18	6.84	4.98	3.51	22.11	19.66	17.41	15.37	13.53	11.88	10.42	9.13	8.02	7.08
	40	33.80	28.00	22.90	18.39	14.53	11.28	8.59	6.40	4.62	22.95	20.53	18.26	16.15	14.20	12.42	10.82	9.41	8.18		
	45	31.45	26.05	21.25	17.08	13.51	10.50	8.00	5.92	23.82	21.42	19.12	16.94	14.89	13.00	11.26	9.71				
	50	28.95	24.00	19.59	15.77	12.49	9.71	7.37	24.72	22.31	19.98	17.74	15.61	13.61	11.76						
55	26.40	21.90	17.89	14.43	11.44	8.88	25.67	23.19	20.80	18.52	16.34	14.27									

运行注意事项请见第 3 页应用范围试验数据 For operation notes, please check the application range test data on page 3



智冷新程 绿能所至！

Wherever the smart cold new process green energy comes!